



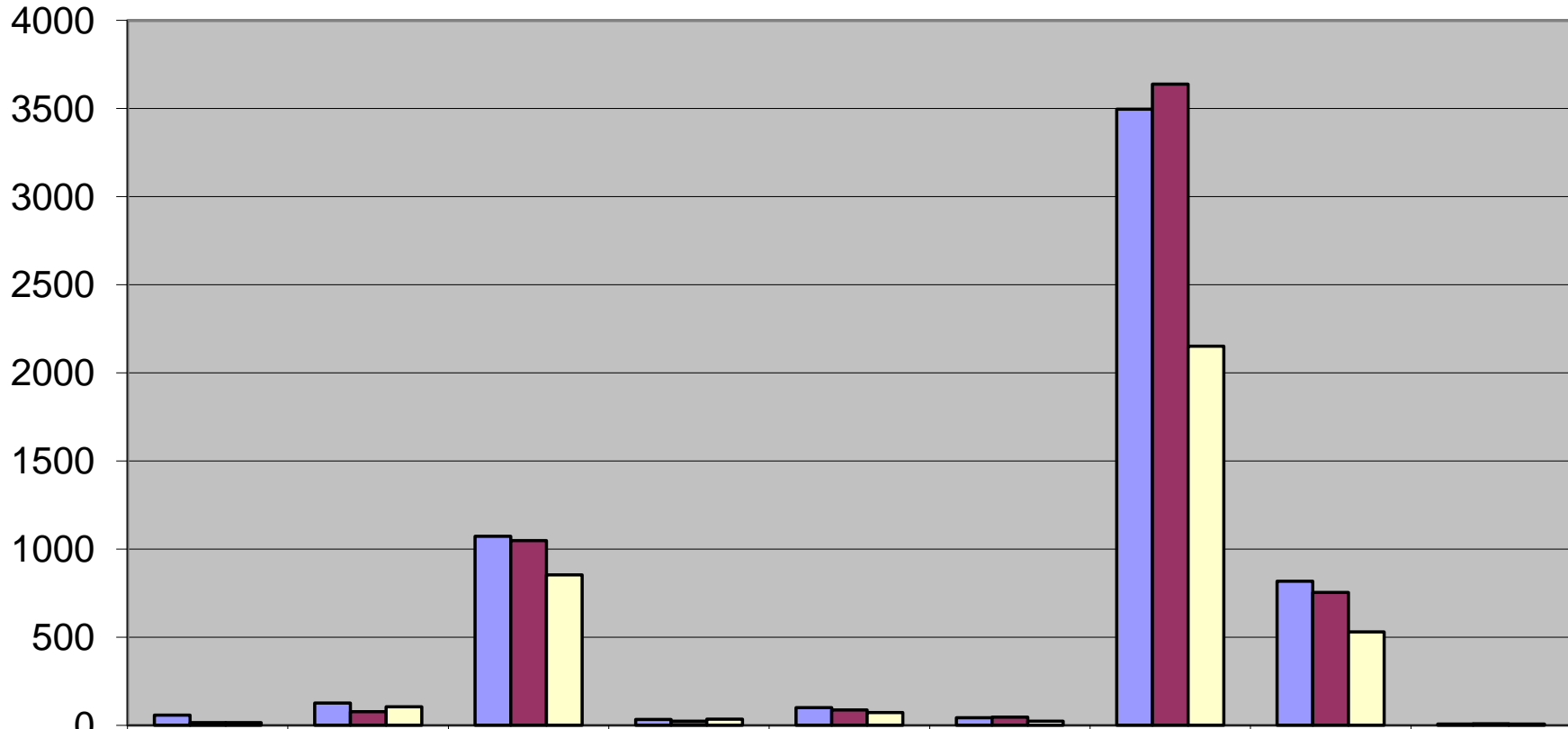
# Part I Crime 2007-2009

## Yakima Police Department



Yakima	Jan- Dec 2007	Jan- Dec 2008	07 to 08 % Change	Current 2009	YTD % Change
ARSON	57	15	-73.68%	14	-6.7%
ASSAULT	126	77	-38.89%	105	36.4%
BURGLARY	1073	1048	-2.33%	853	-18.6%
RAPE	33	23	-30.30%	34	47.8%
ROBBERY	99	86	-13.13%	72	-16.3%
SEX	42	45	7.14%	23	-48.9%
THEFT	3497	3638	4.03%	2151	-40.9%
VEH THEFT	817	754	-7.71%	529	-29.8%
MURDER	6	8	33.33%	6	-25.0%
<b>TOTAL</b>	<b>5750</b>	<b>5694</b>	<b>-0.97%</b>	<b>3787</b>	<b>-33.5%</b>

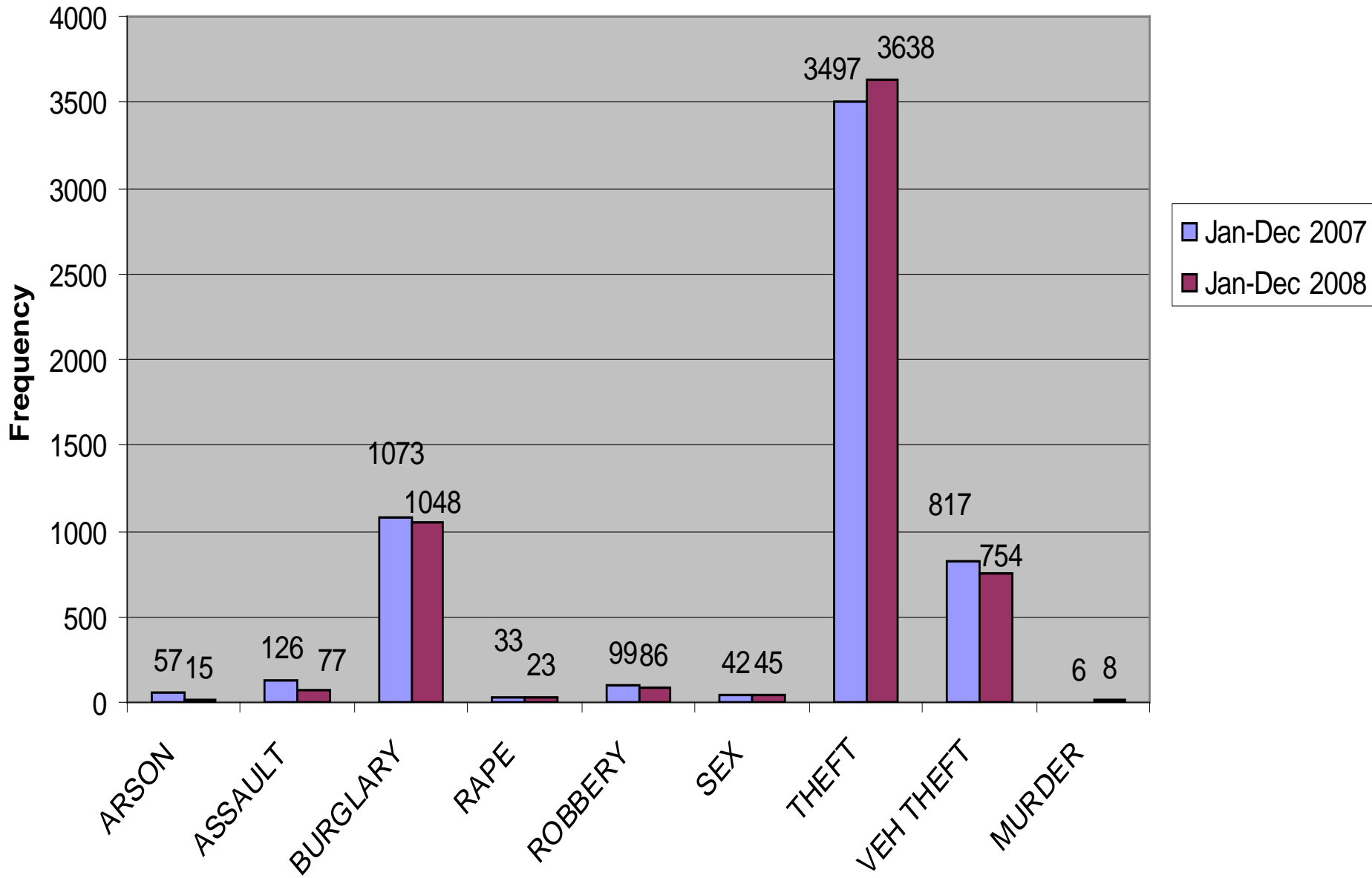
# PART I CRIMES 2007 - 2009



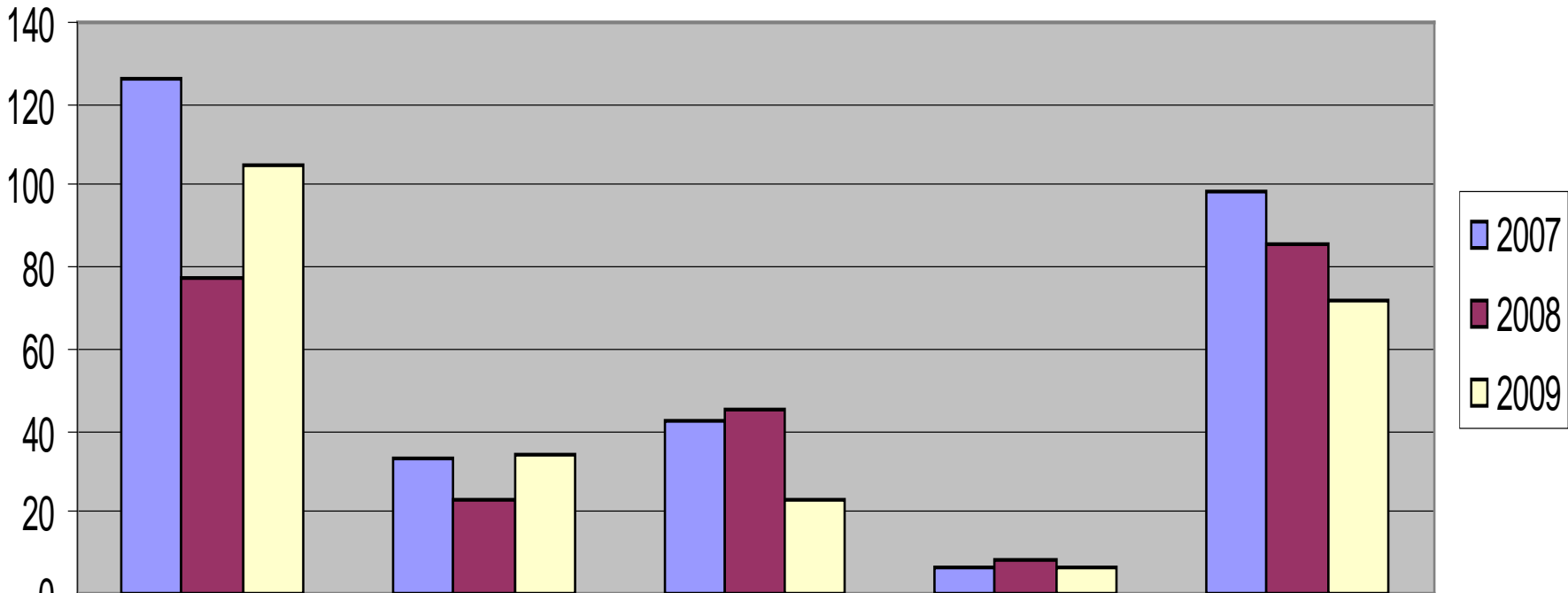
Jan-Dec 2007	57	126	1073	33	99	42	3497	817	6
Jan-Dec 2008	15	77	1048	23	86	45	3638	754	8
Current 2009	14	105	853	34	72	23	2151	529	6

# PART I CRIMES

## 2007 - 2008

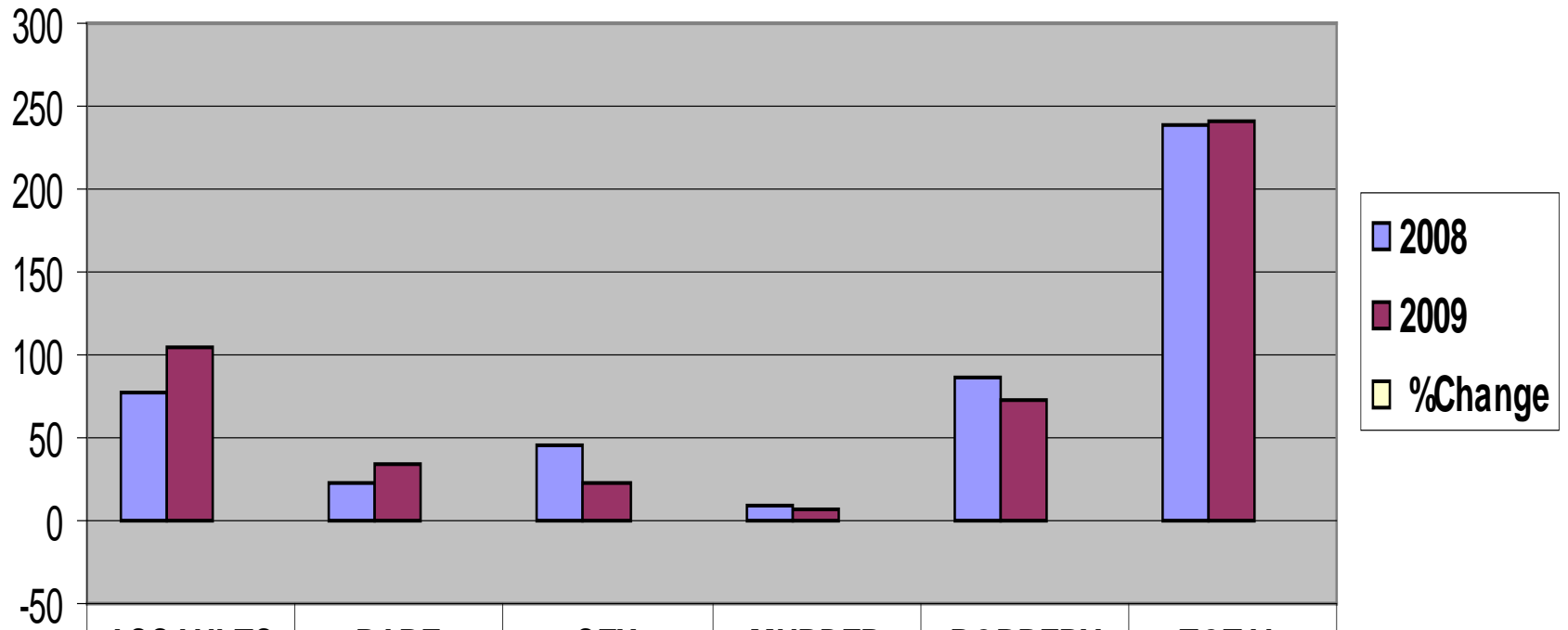


# Violent Crimes



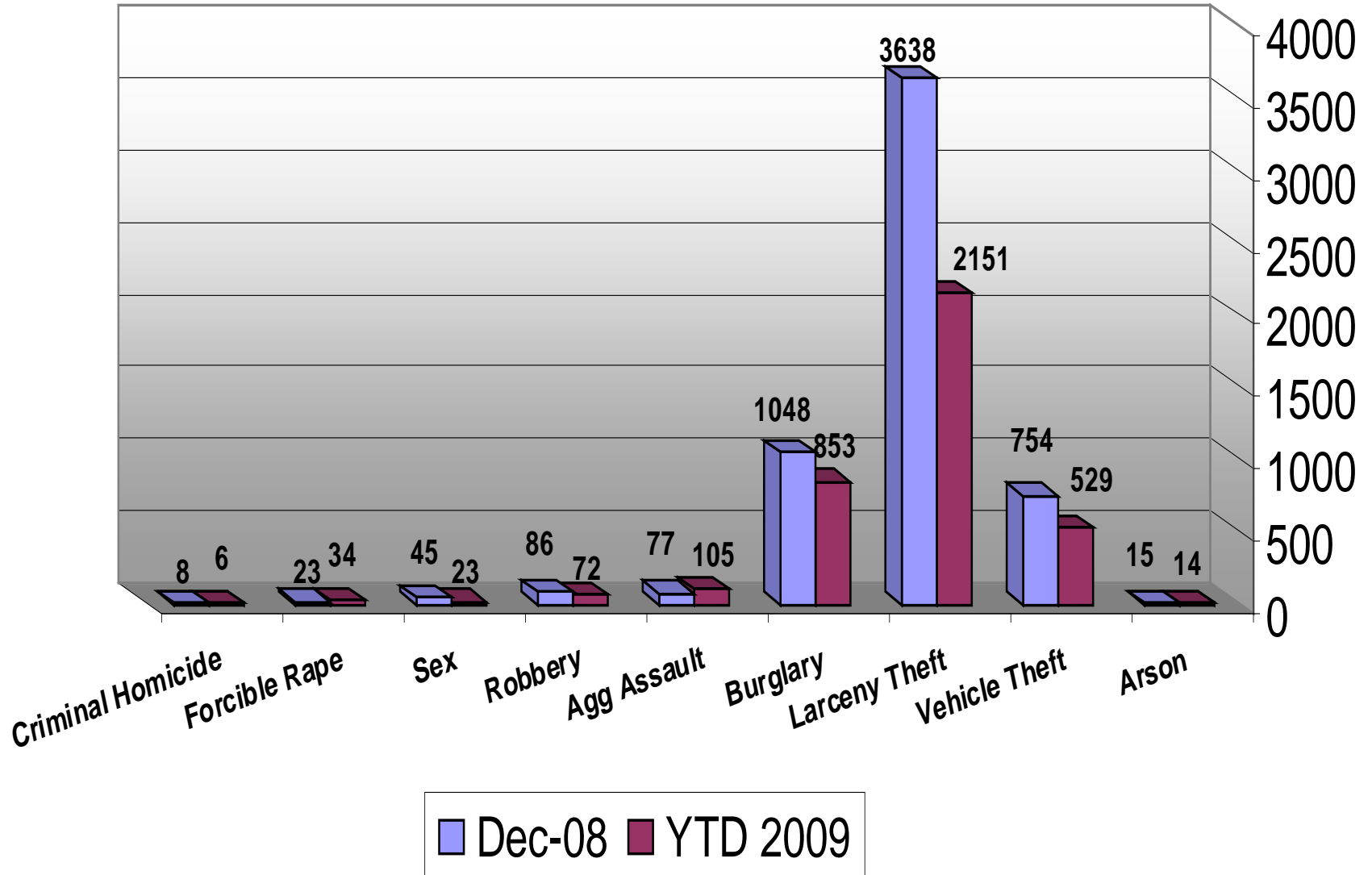
	<b>ASSAULTS</b>	<b>RAPE</b>	<b>SEX</b>	<b>MURDER</b>	<b>ROBBERY</b>
<b>2007</b>	126	33	42	6	99
<b>2008</b>	77	23	45	8	86
<b>2009</b>	105	34	23	6	72

## Violent Crimes - Comparison (2008 and YTD 2009)

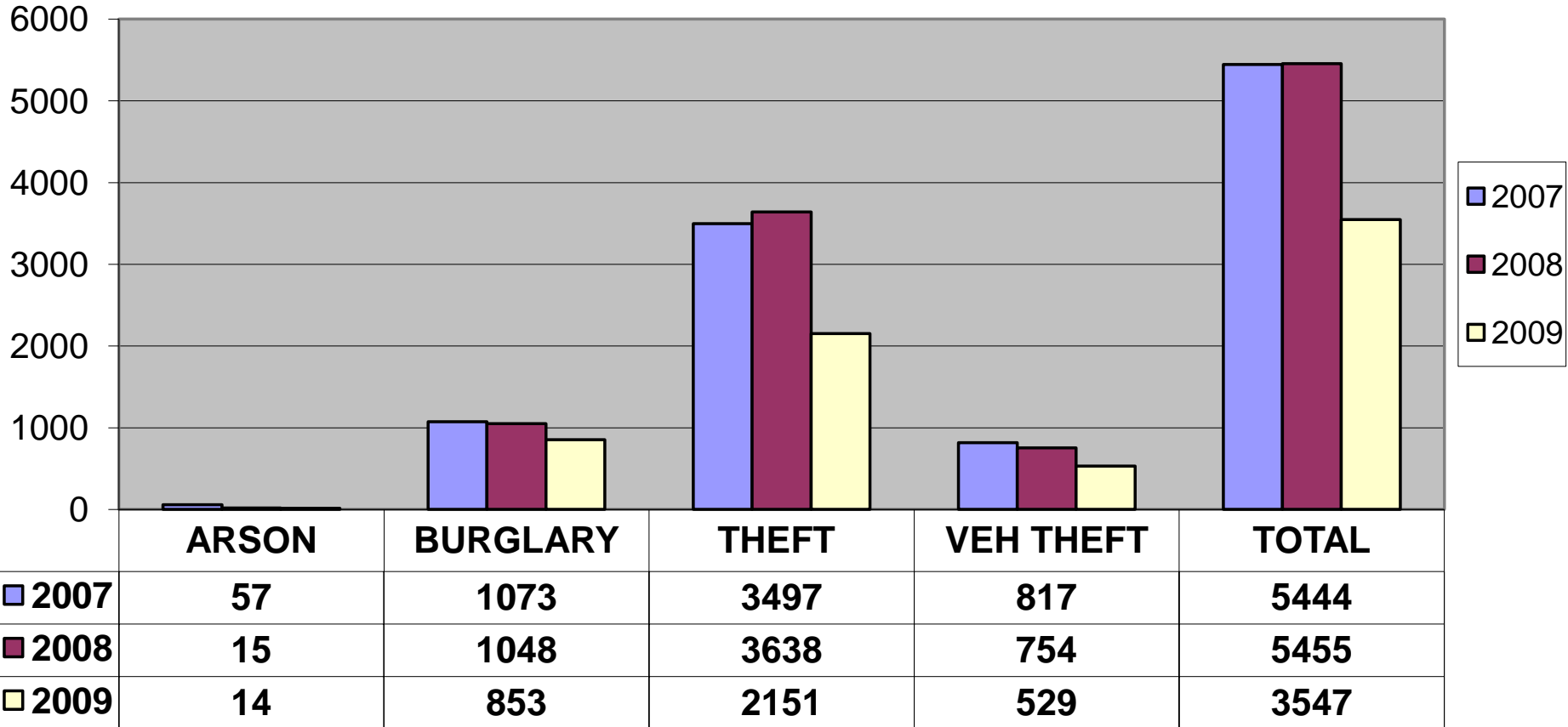


	ASSAULTS	RAPE	SEX	MURDER	ROBBERY	TOTAL
■ 2008	77	23	45	8	86	239
■ 2009	105	34	23	6	72	240
■ %Change	36.4%	47.8%	-48.9%	-25.0%	-16.3%	

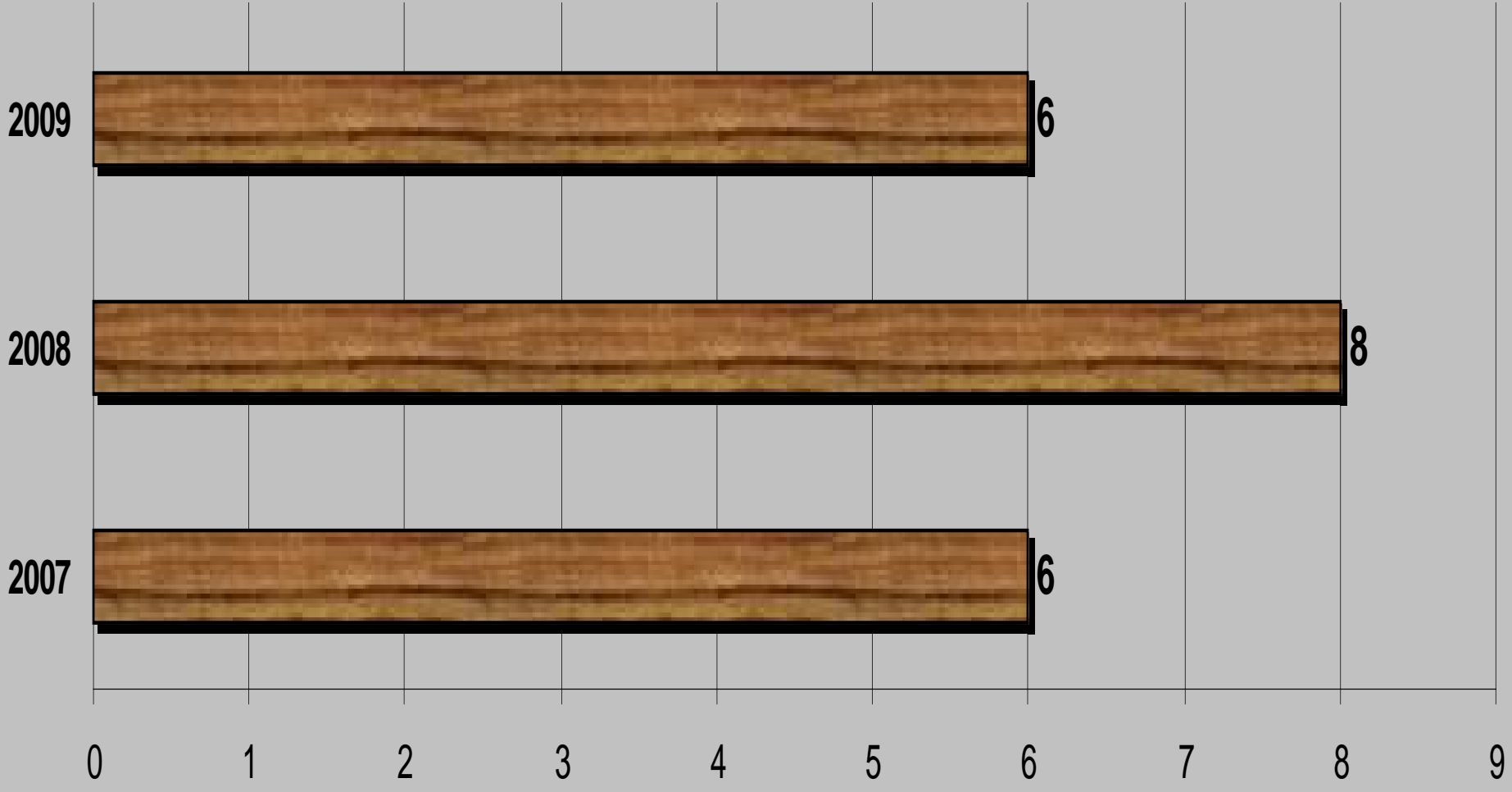
# Part I Crimes 2008 to YTD 2009



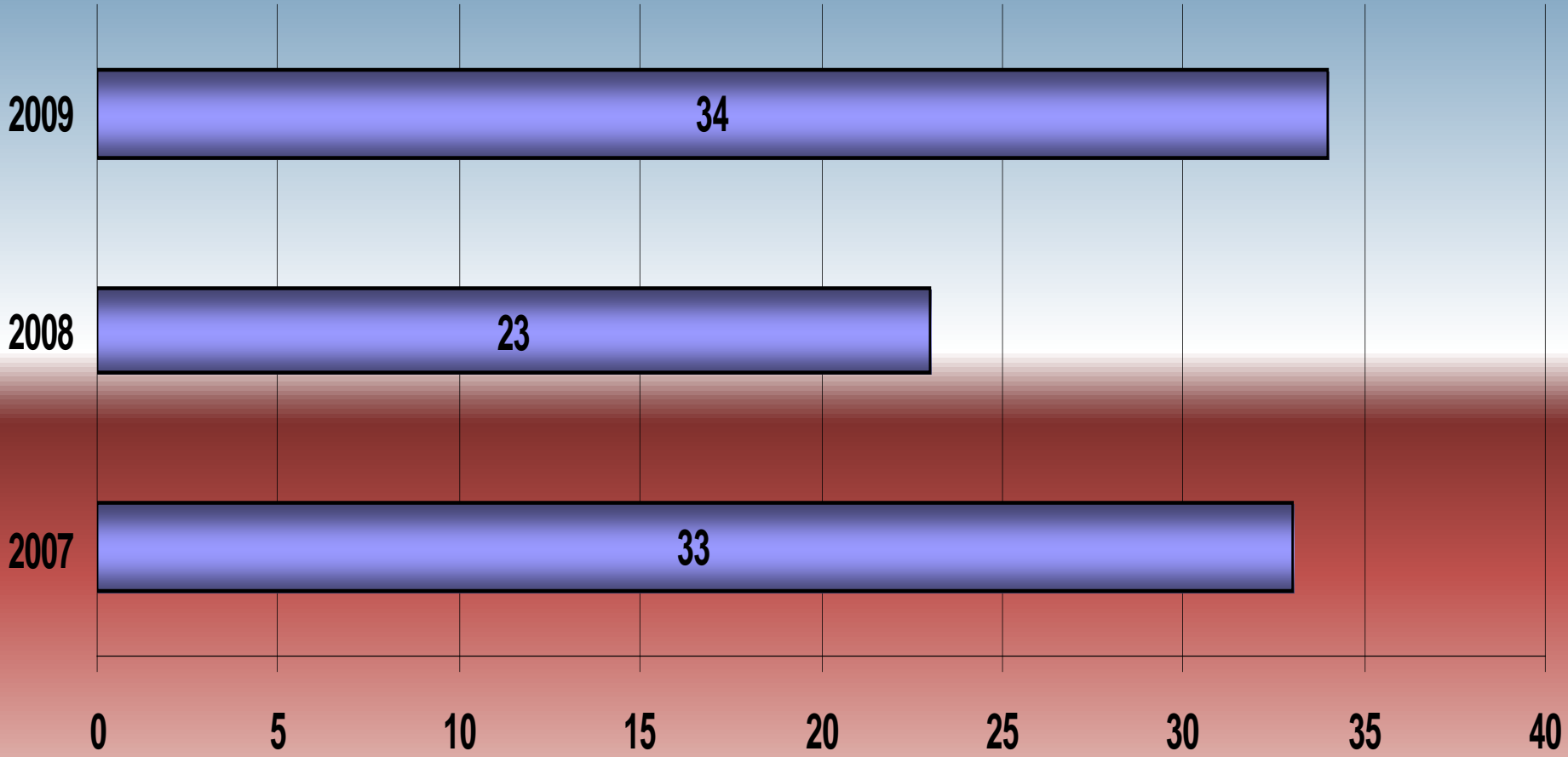
## PART I CRIMES PROPERTY CRIMES



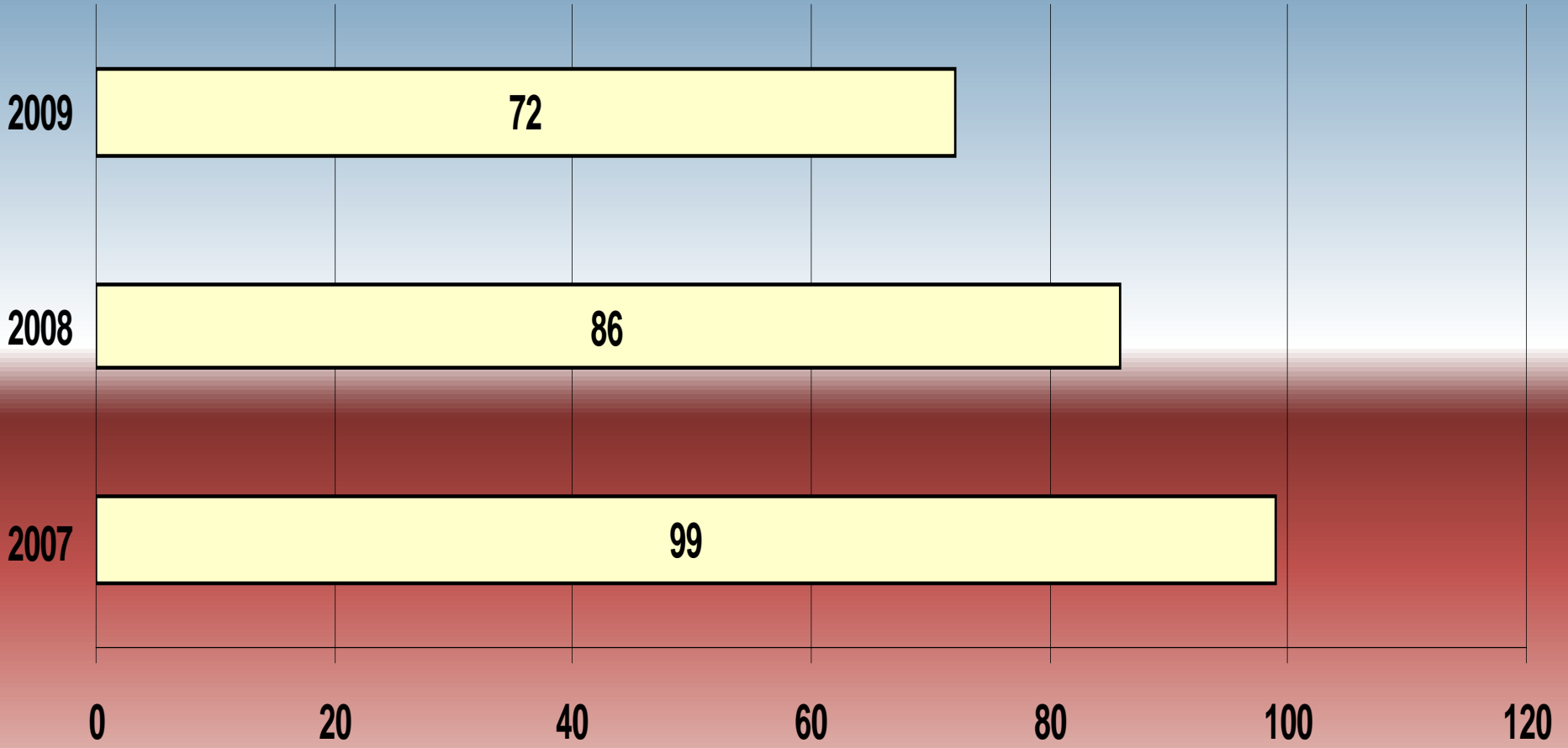
MURDER



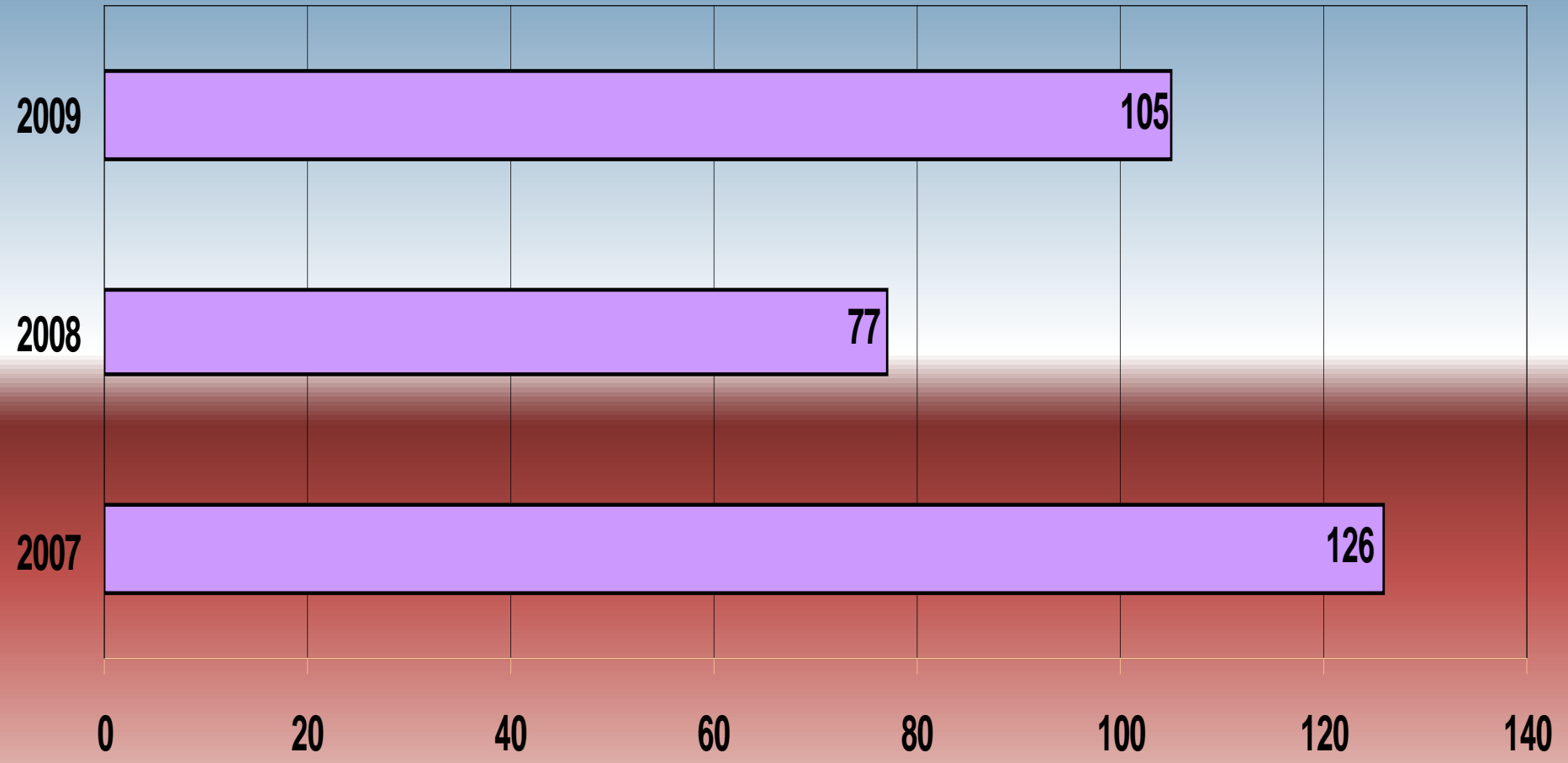
■ RAPE



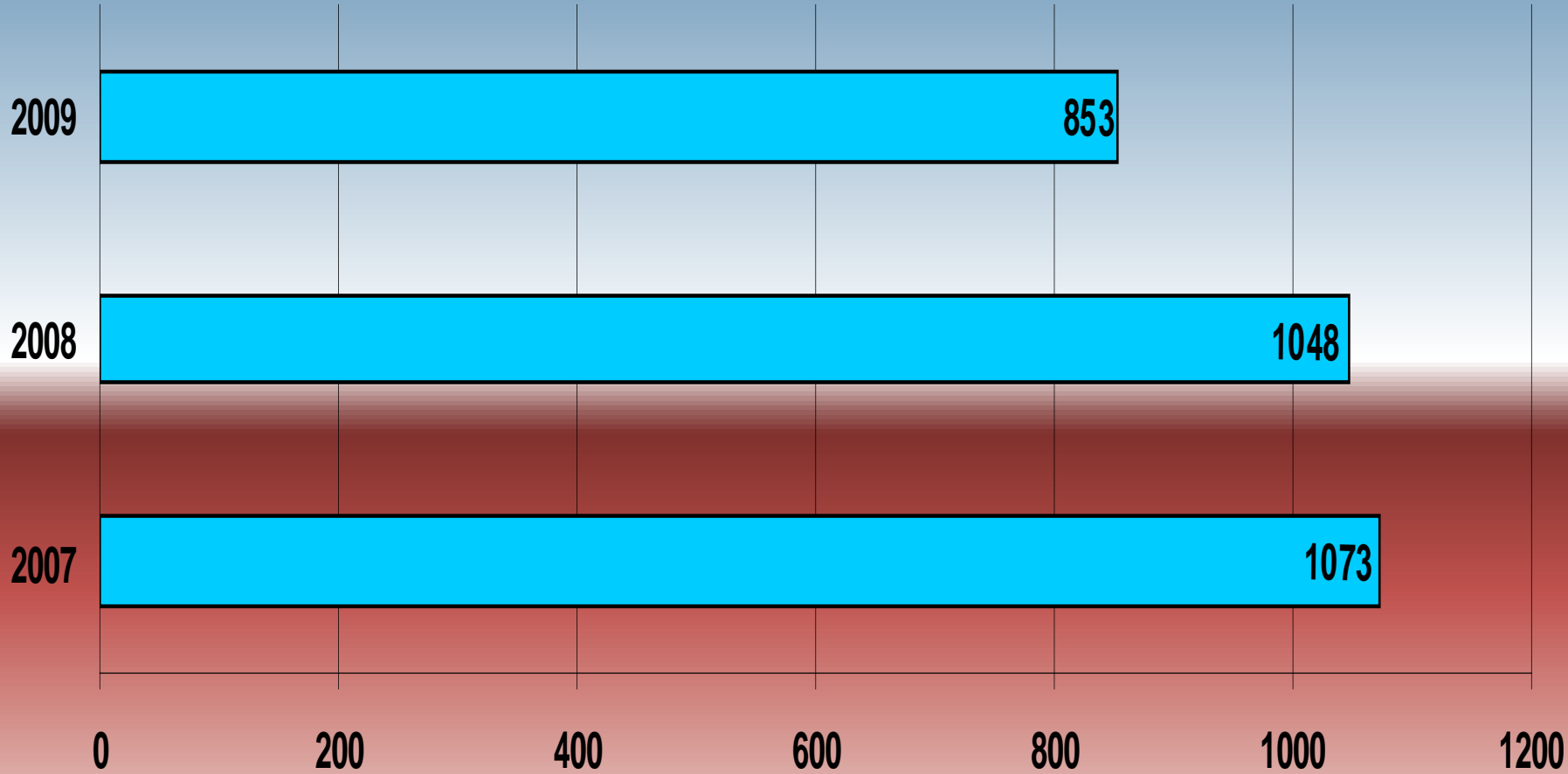
ROBBERY



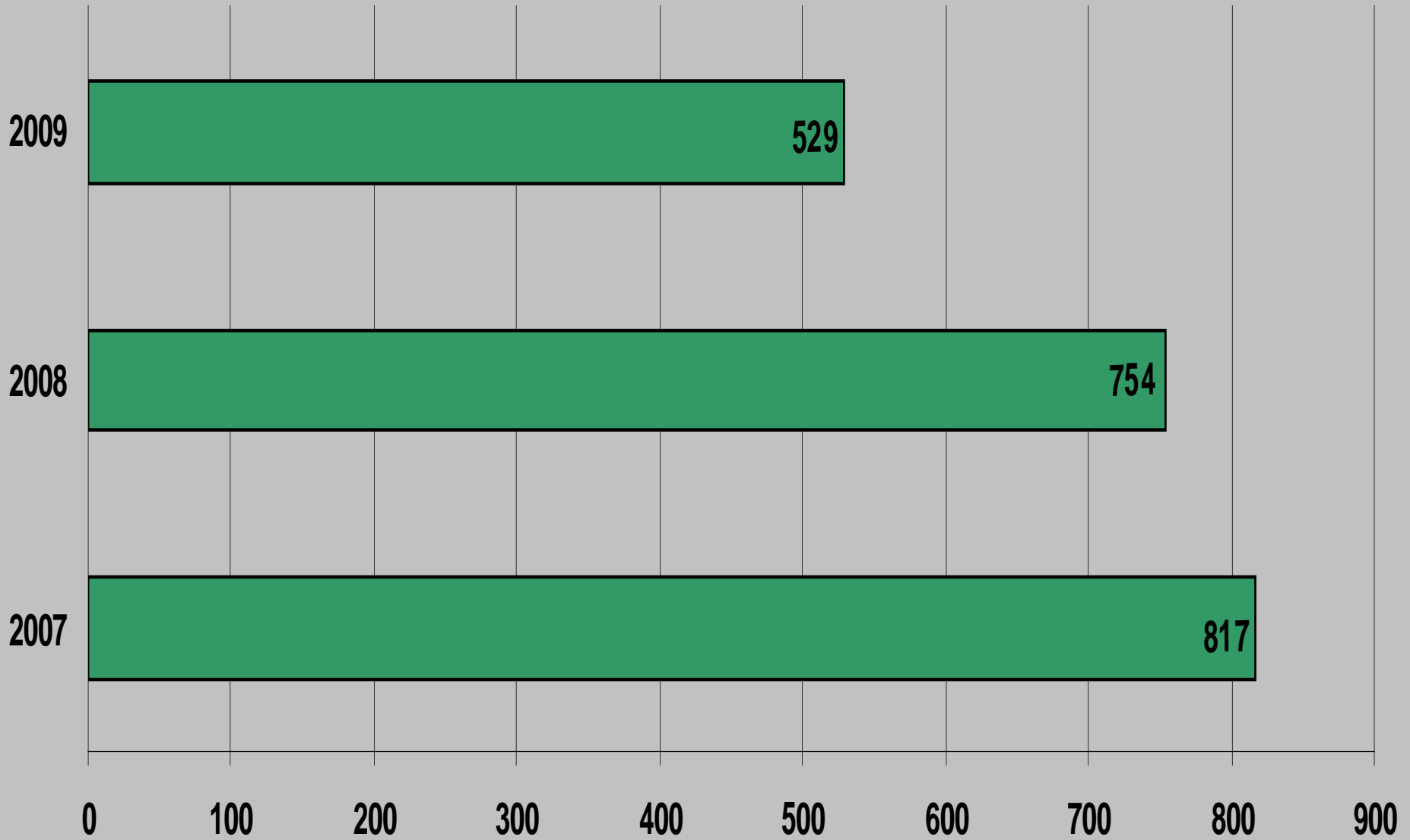
ASSAULTS



■ BURGLARY



# MOTOR VEHICLE THEFT



THEFT

2009

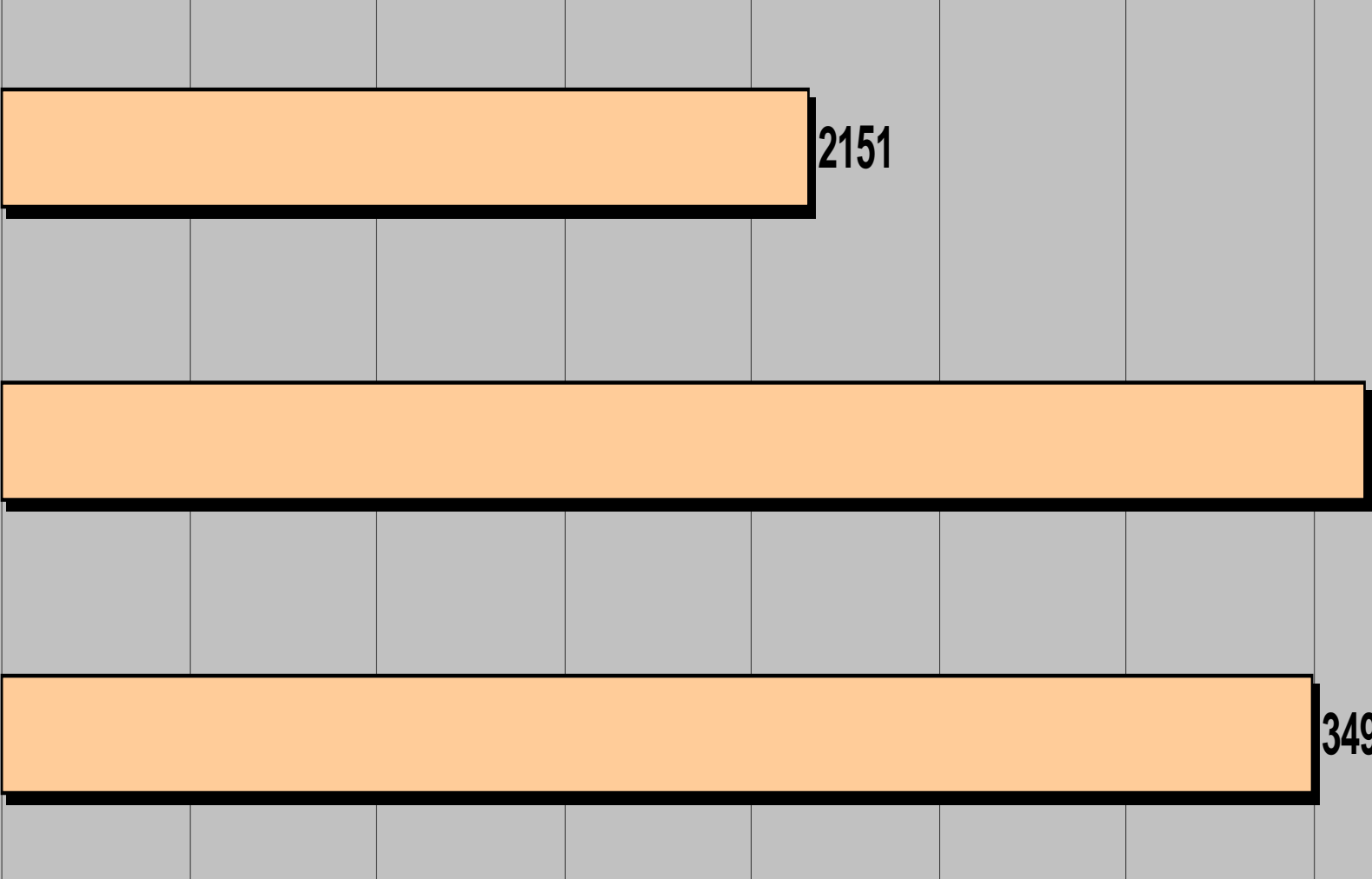
2151

2008

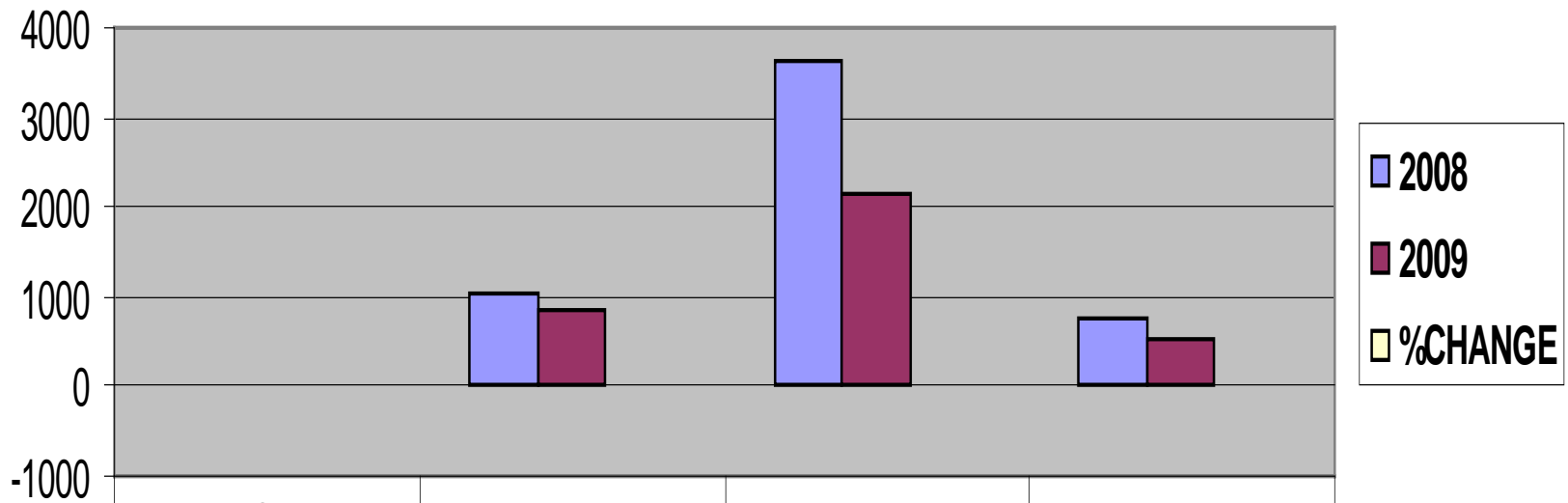
3638

2007

3497



# PROPERTY CRIMES COMPARISON 2008 - YTD 2009



	ARSON	BURGLARY	THEFT	VEH THEFT
2008	15	1048	3638	754
2009	14	853	2151	529
%CHANGE	-6.7%	-18.6%	-40.9%	-29.8%

# All Part I Crimes

## YTD Comparison & Moving Percent Change

